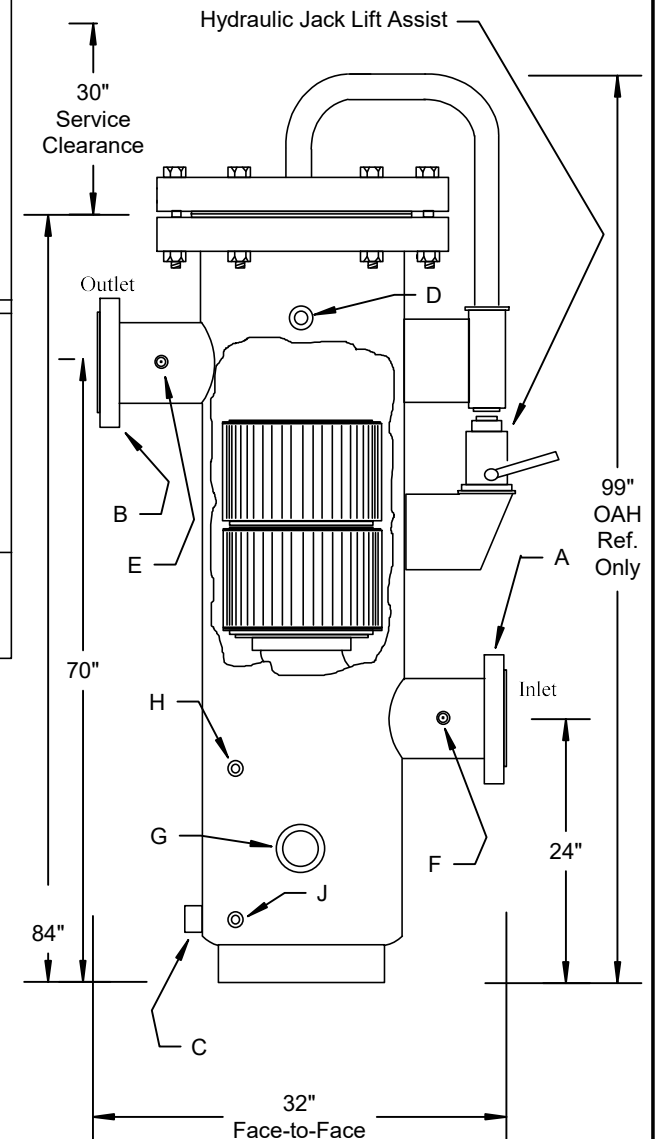
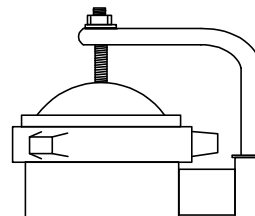


VESSEL DATA SHEET

Design Parameters		Schedule of Openings					
Pressure, Max. at Inlet	740 psi	Service	See Dwg.	Qty.	Size	Rating	Type
Temperature	100 F	Inlet	A	1	10"	300# ANSI	Flange
Corrosion Allow.	0.00"	Outlet	B	1	10"	300# ANSI	Flange
Code Standard	ASME Sect. VIII, Div. 1	Drain	C	1	1"	3000#	Coupling
Stamped?	Optional	Vent	D	1	1"	3000#	Coupling
Operating Parameters		Press. Tap	E	1	1/4"	3000#	Coupling
Pressure, Max.	740 psi	Press. Tap	F	1	1/4"	3000#	Coupling
Temperature	100 F	Float Switch	G	1	2"	3000#	Coupling
Gas Flow Rate	6,200,000 scfh @ 740 psi	Sight Glass	H	1	1/2"	3000#	Coupling
Gas Specific Gravity	0.60	Sight Glass	J	1	1/2"	3000#	Coupling
Vessel Testing		Materials of Construction					
Hydrotest Pressure	1,110 psi	Shell	SA53B			Thickness	
Pneumatic Test Pressure	N/A	Bottom Head	SA234WPB			0.375"	
Radiograph	Optional with U-Stamp	In/Out Piping	SA53B			0.500"	
Magnetic Particle	Optional with U-Stamp	Flanges	SA105			ANSI 300#	
Dye Penetrant	Optional with U-Stamp	Couplings	SA105			3000#	
Filtration Performance		Closure Gasket	Spiral Wound Gasket			0.188"	
Filter Element P/N	(2) #2070K907	Ring Base	SA53B			0.188"	
Type of Filter Media	Borosilicate Fiberglass	Shipping Information					
Retention Rating	0.3 micron	Total Weight	2,600#				
Efficiency of Retention	99.9%	<div>Optional Threaded Quick Opening Modco Closure</div>					

Optional Threaded
Quick Opening
Modco Closure



FilterFab
MANUFACTURING CORPORATION
Model C10-740F Coalescing Filter